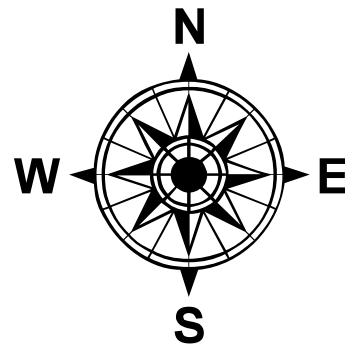
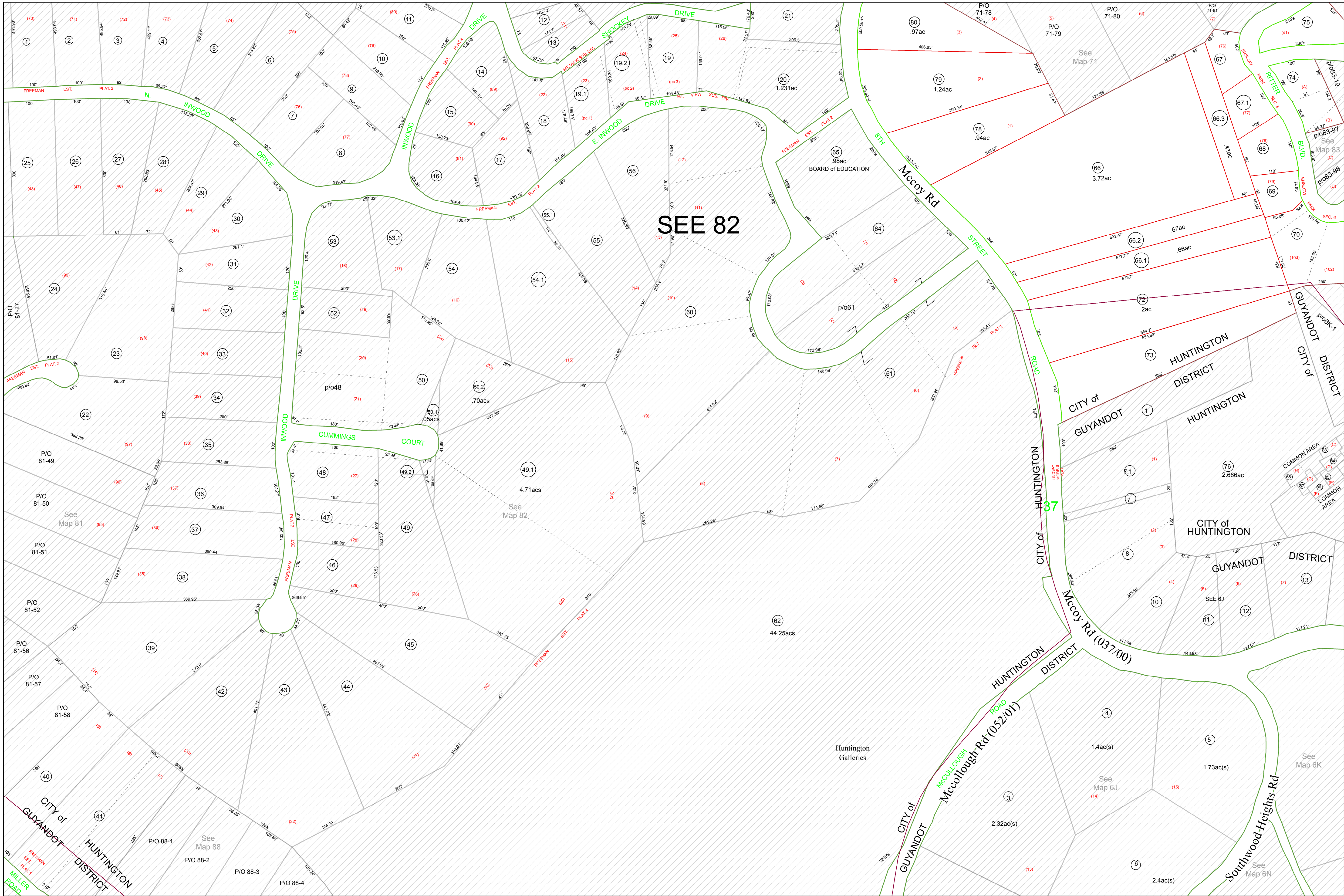


05-0082

04-0005

04-0006

04-0006



04-0006



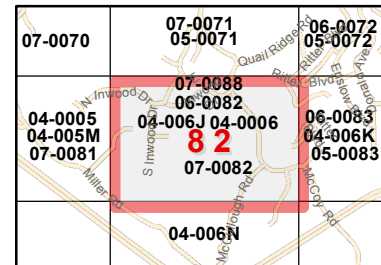
Last Revised on: 6/13/2015

THIS DOCUMENT IS A TAX MAP: It was compiled for purposes of taxation from available record evidence and has not been field verified. It is not a valid survey plat. The existence of data on this map does not imply any "official" status to such data. The Cabell County Assessor's Office assumes no liability that might result from the inappropriate use of this document. /B/Mapper

Restrictions: All tax maps created under the provisions of reappraisal legislation are the property of the Assessor of Cabell County, West Virginia and the reproduction, copying, modification, distribution, or sale of such tax maps or any copies thereof without the written permission of the Cabell County Assessor is prohibited by law.

Office of the
Cabell County Assessor
Irv Johnson, Assessor

Legend:
Roadway Right of Way
Private Roads
Active Lot Lines
Former Lot Lines
Parcel ID's
Political Lines
River/Creek/Stream
Railroad
City Block Numbers
Lot Numbers



Huntington-Gideon Corp (82)